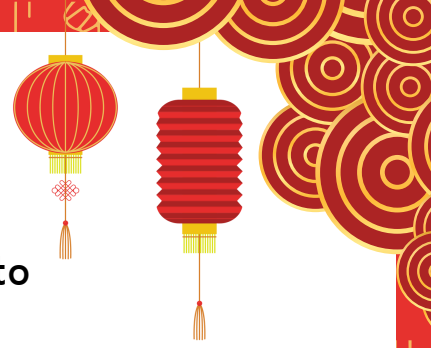



# Year of the Snake Codebreaker

Use your knowledge of multiplication and division facts to uncover this Lunar New Year message.



A	B	C	D	E	F	G	H	I	J	K	L	M	N	O	P
3	15	1	9	4	11	28	5	14	16	20	24	2	6	17	23
			Q	R	S	T	U	V	W	X	Y	Z			
			22	12	21	8	10	25	18	19	7	27			

Letter			
Number			
Fact	$6 \div 3$	$12 \div 4$	$21 \div 3$

$16 \div 2$	$20 \div 4$	$2 \times 2$

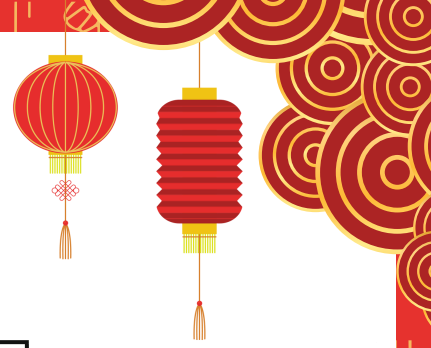
Letter					
Number					
Fact	$6 \times 4$	$50 \div 5$	$54 \div 9$	$33 \div 11$	$4 \times 3$

$36 \div 6$	$12 \div 3$	$6 \times 3$

Letter				
Number				
Fact	$56 \div 8$	$28 \div 7$	$9 \div 3$	$2 \times 6$

$3 \times 5$	$36 \div 9$

$27 \div 9$	$7 \times 3$



Letter								
Number								
Fact	$7 \times 4$	$24 \div 2$	$27 \div 9$	$8 \div 8$	$32 \div 8$	$132 \div 12$	$2 \times 5$	$3 \times 8$

Letter			
Number			
Fact	$24 \div 8$	$3 \times 2$	$3 \times 3$

$2 \times 9$	$7 \times 2$	$3 \times 7$	$48 \div 12$

$30 \div 10$	$7 \times 3$

Letter			
Number			
Fact	$56 \div 7$	$45 \div 9$	$32 \div 8$


$7 \times 4$	$20 \div 5$	$48 \div 8$	$2 \times 4$	$4 \times 6$	$1 \times 4$

Letter					
Number					
Fact	$7 \times 3$	$12 \div 2$	$36 \div 12$	$4 \times 5$	$36 \div 9$

Answer: \_\_\_\_\_  
\_\_\_\_\_  
\_\_\_\_\_

## Year of the Snake Codebreaker

Use your knowledge of multiplication and division facts to uncover this Lunar New Year message.

A	B	C	D	E	F	G	H	I	J	K	L	M	N	O	P
3	15	1	9	4	11	28	5	14	16	20	24	2	6	17	23
			Q	R	S	T	U	V	W	X	Y	Z			
			22	12	21	8	10	25	18	19	7	27			

Letter	M	A	Y
Number	2	3	7
Fact	$6 \div 3$	$12 \div 4$	$21 \div 3$

T	H	E
8	5	4
$16 \div 2$	$20 \div 4$	$2 \times 2$

Letter	L	U	N	A	R
Number	24	10	6	3	12
Fact	$6 \times 4$	$50 \div 5$	$54 \div 9$	$33 \div 11$	$4 \times 3$

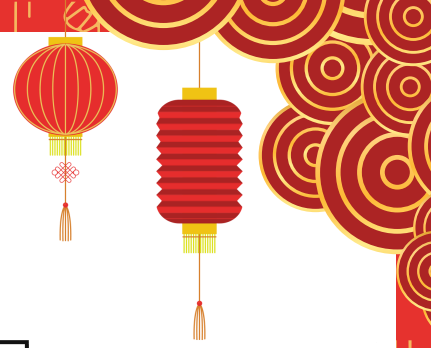
N	E	W
6	4	18
$36 \div 6$	$12 \div 3$	$6 \times 3$

Letter	Y	E	A	R
Number	7	4	3	12
Fact	$56 \div 8$	$28 \div 7$	$9 \div 3$	$2 \times 6$

B	E
15	4
$3 \times 5$	$36 \div 9$

A	S
3	21
$27 \div 9$	$7 \times 3$

# ANSWERS



Letter	G	R	A	C	E	F	U	L
Number	28	12	3	1	4	11	10	24
Fact	$7 \times 4$	$24 \div 2$	$27 \div 9$	$8 \div 8$	$32 \div 8$	$132 \div 12$	$2 \times 5$	$3 \times 8$

Letter	A	N	D
Number	3	6	9
Fact	$24 \div 8$	$3 \times 2$	$3 \times 3$

W	I	S	E
18	14	21	4
$2 \times 9$	$7 \times 2$	$3 \times 7$	$48 \div 12$

A	S
3	21
$30 \div 10$	$7 \times 3$

Letter	T	H	E
Number	8	5	4
Fact	$56 \div 7$	$45 \div 9$	$32 \div 8$

G	E	N	T	L	E
28	4	6	8	24	4
$7 \times 4$	$20 \div 5$	$48 \div 8$	$2 \times 4$	$4 \times 6$	$1 \times 4$

Letter	S	N	A	K	E
Number	21	6	3	20	4
Fact	$7 \times 3$	$12 \div 2$	$36 \div 12$	$4 \times 5$	$36 \div 9$

Answer: May the new year be as graceful and wise as the gentle snake.