

Stage 4 Lesson 2

Prefixes 'in-' and 'sub-'



Word Maps

Read the word. Write each word out, drawing long lines for the syllable breaks. Write each word out again, adding the sound buttons for each phoneme. Finally, rewrite the whole word.

Words	Syllable Breaks	Sound Buttons	My Word
invisible			
subject			
indefinite			
submarine			
inadequate			

Name

Stage 4 Lesson 2

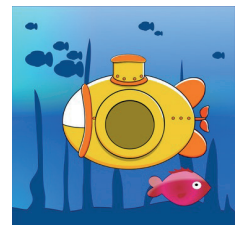
Prefixes 'in-' and 'sub-'



Alphabetical Order and Sentences

Put this week's words in alphabetical order. Then write a sentence about the pictures below. Remember to include the word in your sentence.

submarine _____



incorrect _____



Stage 4 Lesson 2

Prefixes 'in-' and 'sub-'



In a Sentence

Write a sentence about the pictures below.
Remember to include the word in your sentence.

subheading



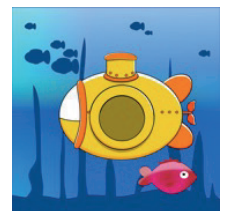
invisible



incorrect



submarine



Stage 4 Lesson 2

Prefixes 'in-' and 'sub-'



Cloze Sentences

Complete the sentences by replacing the missing word with one of the blue words.

inadequate

indefinite

subject

submerge

inactive

subtropical

Geography is my favourite _____.

The crocodile began to _____ as it waited for its prey.

We will be living here for an _____ amount of time.

The volcano has been _____ for 100 years.

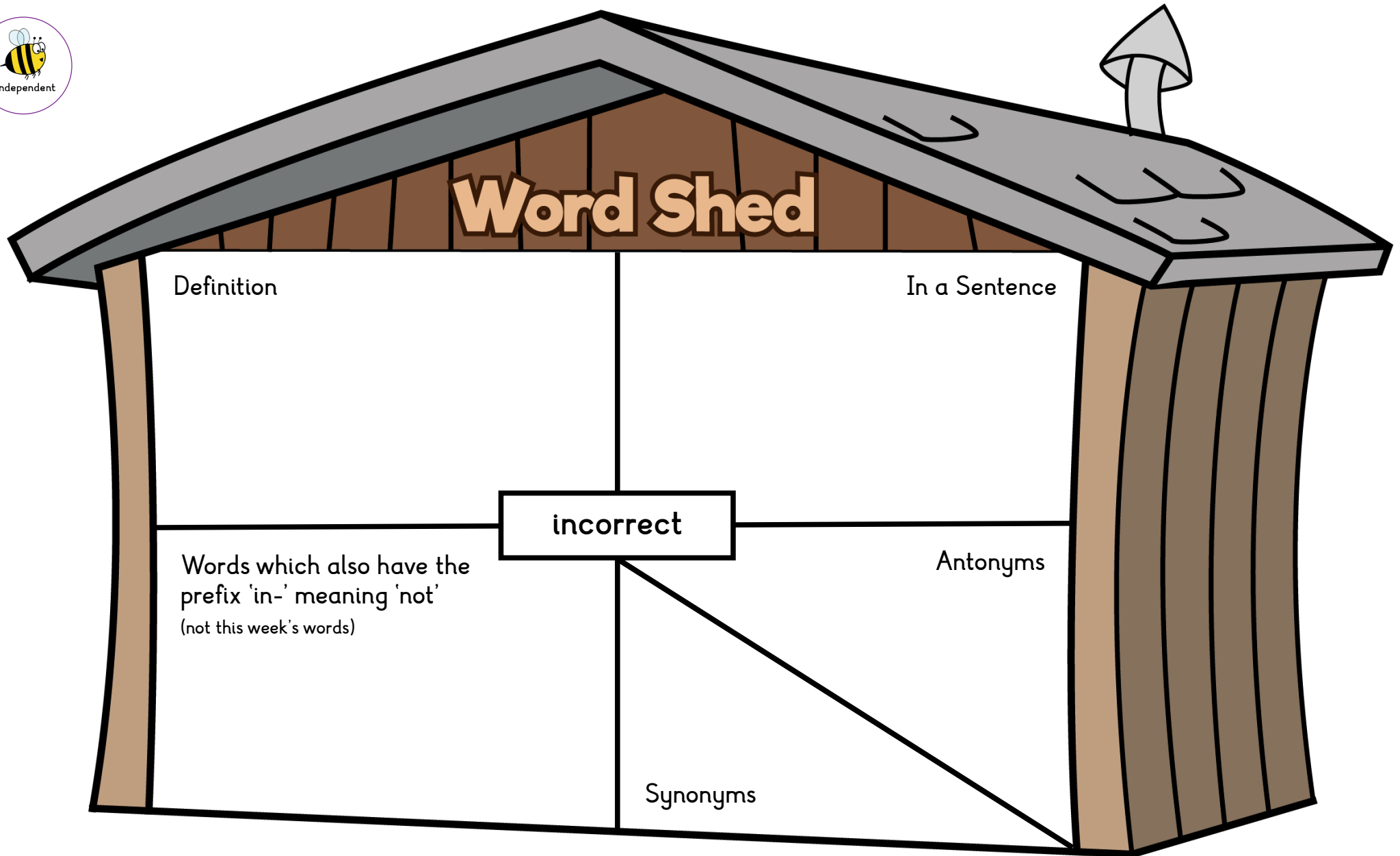
The parking facilities are totally _____.

_____ regions are cooler than equatorial regions.

Name

Stage 4 Lesson 2

Prefixes 'in-' and 'sub-'



Stage 4 Lesson 2

Prefixes 'in-' and 'sub-'



Word Shed

Definition		In a Sentence
Synonyms		Antonyms

A central box is positioned between the 'Synonyms' and 'Antonyms' sections.

Can you sort this week's words according to the prefix?

'in-' prefix

'sub-' prefix

Stage 4 Lesson 2

Prefixes 'in-' and 'sub-'

submarine

inactive

submerge

indefinite

subtropical

incorrect

incurable

subheading

invisible

subject

Stage 4 Lesson 2

Prefixes 'in-' and 'sub-'

