

Stage 3 Lesson 1

Digraph 'ou' sounds like /ow/



Word Maps

Read the word. Write each word out, adding the sound buttons for each phoneme. Finally, rewrite the whole word.

Words	Sound Buttons	My Word
mouth		
hound		
spout		
around		
proud		
ouch		

Name

Stage 3 Lesson 1

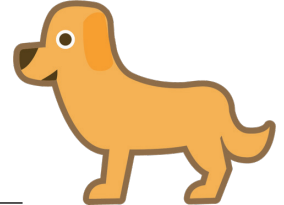
Digraph 'ou' sounds like /ow/



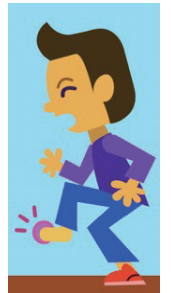
Sentences and Synonyms

Write a sentence about the pictures below. Remember to include the word in your sentence. Then read the sentences and replace the underlined word with one of the blue words.

hound



ouch



sprout	found	sound	spout
--------	-------	-------	-------

Alex finally located his mother's car keys. _____

The seed began to grow after a few weeks. _____

Water began to gush out of the hose pipe. _____

I heard a strange noise in the garden. _____

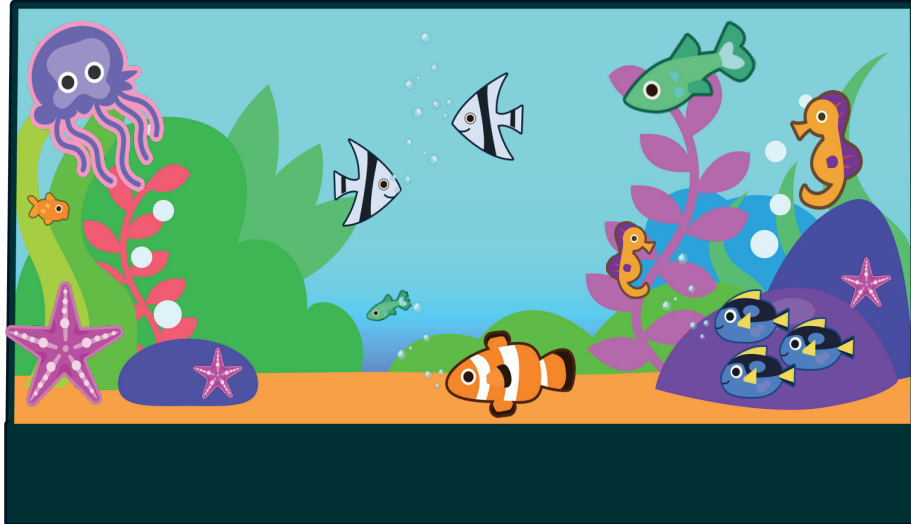
Stage 3 Lesson 1

Digraph 'ou' sounds like /ow/



Words in Action

Can you write a description of this picture?



Words to include: trout, mouth, around

Stage 3 Lesson 1

Digraph 'ou' sounds like /ow/



Word Shed

Definition		In a Sentence	
proud			
Synonyms		Antonyms	

Stage 3 Lesson 1

Digraph 'ou' sounds like /ow/

around

spout

hound

proud

trout

sound

found

sprout

ouch

mouth

Stage 3 Lesson 1

Digraph 'ou' sounds like /ow/



Word Shed

Definition		In a Sentence
Synonyms		Antonyms

The diagram is a cartoon illustration of a wooden shed with a grey roof. The words 'Word Shed' are written in large, bold, orange letters across the top of the shed's front wall. The shed is divided into four quadrants by a vertical line down the center and a horizontal line across the middle. In the center of the horizontal line, there is a small white rectangular box. The quadrants are labeled: 'Definition' (top-left), 'In a Sentence' (top-right), 'Synonyms' (bottom-left), and 'Antonyms' (bottom-right). A grey chimney with a pointed top is on the right side of the roof.

Stage 3 Lesson 1

Digraph 'ou' sounds like /ow/

How many new words can you create by adding prefix(es) and/or suffix(es)?

Prefix

Base Word

Suffix