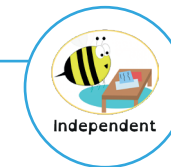


Lesson 2: Words in the '-am' and '-it' families



To be able to segment words into the correct syllables and phonemes

To spell words in the '-am' and '-it' families

Read the word. Write each word out, adding the sound buttons underneath. Finally, rewrite the whole word.

| Words | Sound Buttons | My Word |
|-------|---------------|---------|
| kit | kit ••• | |
| hit | | |
| dam | | |
| ram | | |
| ham | | |
| sit | | |

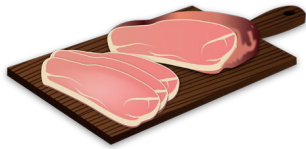
Name

Lesson 2: Words in the '-am' and '-it' families

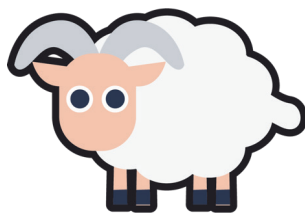


To be able to segment words into the correct syllables and phonemes
 To spell words in the '-am' and '-it' families

Write the word that matches the picture.







Choose one of this week's words to write in a sentence.

Lesson 2: Words in the '-am' and '-it' families



To be able to segment words into the correct syllables and phonemes

To spell words in the '-am' and '-it' families

Choose the correct words to complete the two sentences. Try to write three sentences of your own.

| | Your Word | Your Sentence |
|-----|-----------|--------------------------------|
| kit | | |
| hit | | |
| dam | | My brother is called _____. |
| ram | | |
| ham | | There is a _____ eating grass. |
| sit | | |
| bit | | |
| jam | | |
| Sam | | |
| fit | | |

Name