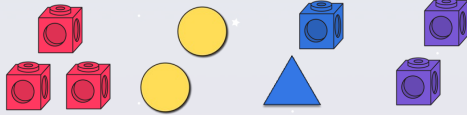


To be able to explore parts and wholes **MathShed**

Starter:

Which one doesn't belong?



Explain your answer.

To be able to explore parts and wholes **MathShed**

Activity 1:

How many different ways can you put the counters in 2 groups? You might want to have a go with the same number of counters in front of you.



To be able to explore parts and wholes **MathShed**

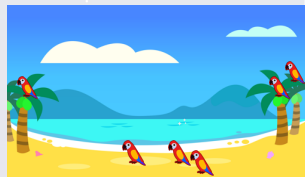
Activity 2:

Can you complete the sentences?

There are ____ parrots in the trees.

There are ____ parrots on the beach.

There are ____ parrots altogether.



To be able to explore parts and wholes **MathShed**

Activity 3:

Astrobee is sorting the fruit.



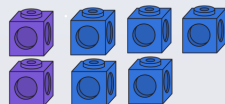
apples

bananas

To be able to explore parts and wholes **MathShed**

Evaluation:

The cubes to the right show the calculation $5 + 2 = .$



Is Astrobee correct?
Explain your answer.