



Healthy Food Healthy Planet

Which is the closest meaning to 'foundation' in the 'British Nutrition Foundation'?



The load-bearing part of a building



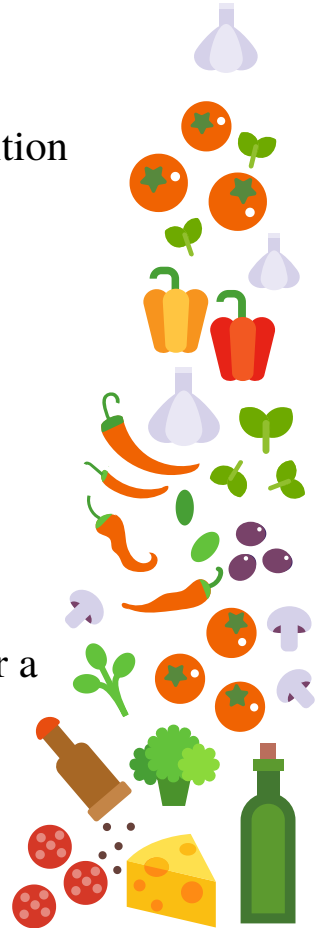
A base make-up to even out skin tone



An occasion when an organisation is created



An organisation created to provide money and support for a group or particular type of study.



How is food production contributing to climate change?

Find **two** examples

.....
.....
.....

Circle three things you can access from the British Nutrition Foundation according to the text.

activities

vouchers

recipes

advice

newsletter

On what date does Healthy Eating Week 2022 start?

.....



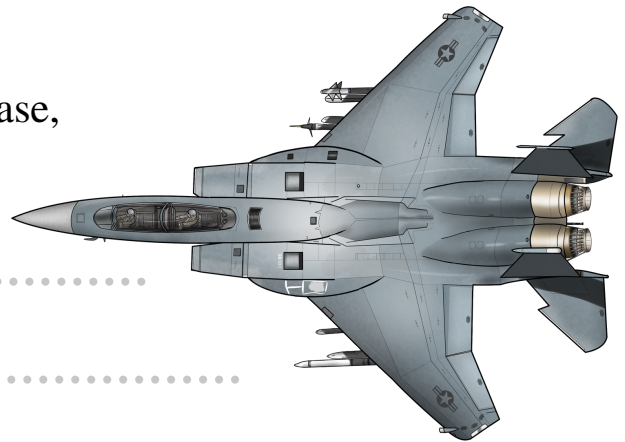


Top Gun

Summarise why Paramount Pictures are being sued by the family of Ehud Yonay.

.....
.....
.....

What does the word 'contest' mean in the phrase, '...contest the action.'?



.....
.....

Name two roles, according to the article, that Tom Cruise has played.

.....
.....

Create a headline for the LeBron James article. Can you include alliteration?

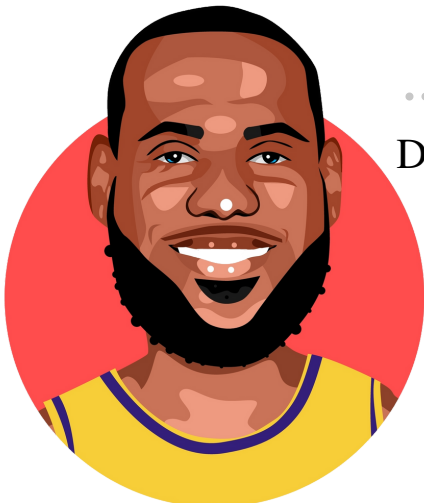
.....

Which 3 teams has LeBron played for?

.....

Do you think paying £4.78m is a justifiable price for a card?

.....
.....
.....





What surprised the Forth Valley Police this week?

.....

Where do alpacas come from?

.....



Which word is closest in meaning to 'not given approval or acceptance'?

appreciative

rejected

routine

Find two facts about puffins' beaks.



.....

.....

What is suggested you do with a nestling which has no nest?



Leave it alone and monitor it.



Place it in a sheltered spot.



Make a replacement nest.

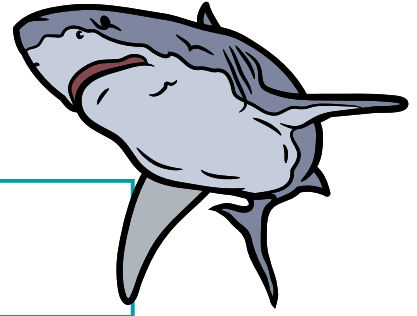
Create a suitable headline for the article about the baby birds.

(use a rhyme)

.....



Find the big numbers



The weight a megladon could grow up to.
(tonnes)

The blade length of a giant turbine.
(metres)

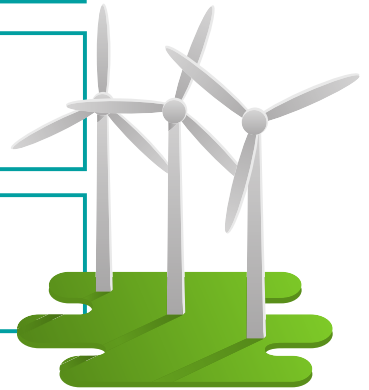
The area covered by the largest plant.
(square kilometres)

The size a megladon tooth could grow to.
(cm)

The number of giant turbines due to be
erected in Denmark.

The number of seeds used to grow the 77
miles of ribbon weed.

The approximate length of a great white
shark. (metres)



Why do you think the word 'big' has been used in the headline of all three pieces?

.....

Which article do you find the most interesting and why?

.....

.....

Escape from Alcatraz

Summarise the events which allowed John and Clarence Anglin and Frank Morris to escape from Alcatraz.



.....

.....

.....

.....

.....

.....

True or False

Tick the correct box next to the statement.

True

False

Nik Wallenda was a circus trapeze artist.

Nik Wallenda completed his most famous tightrope walk in the dark.

Nik completed his most famous tightrope walk crossing the Angel Falls.

The tightrope on 15/6/12 was stretched over the gorge by guy ropes.

When he reached the Canadian side, he went down on one knee to propose.





What does the word 'chronic' mean in the Nadal article?

.....

What is causing Nadal to consider retiring from tennis?

.....

Who won the women's singles in the French Open and who did she beat?

.....

Cross out the untruths

Gareth Bale headed the ball into his own goal.

Wales have reached the final of the World Cup for the first time.

Wales played Sweden in the 1958 World Cup

Wales and Ukraine went head to head in Cardiff



Gareth Bale is the Welsh team captain

Wales will play in Bahrain in November