

Phonics Shed

Sound Wall

The order of the phonemes in this resource is designed to match the [suggested teaching order for Chapter 4c](#).



The green themed hexagons are consonant sounds, with two shades of green used to differentiate between consonants and consonant digraphs.



The red theme that follows are short vowel sounds, long vowels and vowel digraphs and trigraphs. Short vowels are light red, long vowels are dark red and the remaining section is a mid-red.



The phonemes are presented on a hexagon solid coloured background.



These are then followed by hexagons showing the graphemes that are most often used to represent the phonemes. Each of these contains an example word, in which the specific grapheme is highlighted, and most also have an illustration of the word.

The most common graphemes have a solid border of the same colour as the phoneme hexagons.

Next, are less-common graphemes which have already been taught in Chapters 2 to 4b; these have a dashed border and a tinted background.



The graphemes with no border are uncommon graphemes that have not yet been taught. Most of these new graphemes are covered in the Chapter 4c lessons linked to the phoneme.

Occasionally, you will see a hexagon with a lock symbol, this is to represent a grapheme that only appears in a Common Exception Word (CEW) – similar to our High Frequency Word cards. Please note, some CEWs are not illustrated.



We have attempted to include example words that are fully decodable at the point the specific GPC is taught in the scheme where possible or have linked the word to the character the specific GPC is linked to. This allows the use of the Sound Wall resource from Chapter 2 onwards as an evolving display which can be added to as each new GPC is taught.



Where the letter 'k' is used, we have provided hexagons for both letter formations ('k' or 'k').

Some of the graphemes may not be relevant to the general accent of the area in which your setting is situated. Grapheme hexagons can be rearranged to fit other similar phonemes or omitted from the display if necessary; careful discretion is advised when doing this as some phonemes are very similar and can be tricky to differentiate between, for example /oo/ and /ue/. You will also find that some graphemes are repeated at different points to account for regional variations, for example the 'au' in 'laugh' which can be pronounced /ar/ or /a/.



Printing this Resource

Each hexagon has a thin pink line within the black border, this links the resource to Chapter 4c and provides a cutting guide or a defined area which can overlap the next hexagon when tessellating them.

If Using Adobe Acrobat:

To print the resource without these two introduction pages, please select pages 3 to 314 when selecting pages to print: select the '**Pages**' option under 'Pages to Print' and type '**3-314**' into the text box.



Depending on the size of the display area you may wish to print multiple pages per sheet. This can be done by selecting '**Multiple**' in the page sizing options and then selecting the desired number of pages per sheet. We suggest trialling one hexagon printed in multiple sizes before printing the whole document: page 8 ('wh') would provide a relatively low-ink example of both text and illustration size.

You may wish to check which of the graphemes you wish to display next to the phonemes before printing, in order to save paper and ink. To omit pages, you must type in the page ranges that you do want to print into the 'Pages to Print' section. For example, if you pronounce 'laugh' with an /ar/ sound you would not need page 148; therefore, you would select the '**Pages**' option in the 'Pages to Print' section and enter '**3-147, 149-314**' in to the text box before printing.

Note: Wording in the dialogue box that opens when selecting print may be slightly different depending on the PDF viewer being used; the examples given are specific to Adobe PDF viewers on Windows.

If Using Google Chrome or Microsoft Edge Browsers:

To print the resource without these two introduction pages, please select pages 3 to 314 when selecting pages to print: select the '**Customised**' option under 'Pages' in Chrome and type '**3-314**' into the text box. When using Edge, you will only need to select the text box at the bottom of the list to enter the values.

Depending on the size of the display area you may wish to print multiple pages per sheet. This can be done by selecting the desired number from the drop-down menu under '**Pages per Sheet**'. We suggest trialling one hexagon printed in multiple sizes before printing the whole document: page 8 ('wh') would provide a relatively low-ink example of both text and illustration size.

You may wish to check which of the graphemes you wish to display next to the phonemes before printing, in order to save paper and ink. To omit pages, you must type in the page ranges that you do want to print into the 'Pages' section. For example, if you pronounce 'laugh' with an /ar/ sound you would not need page 148; therefore, in Chrome you would select the '**Customised**' option in the 'Pages' section and enter '**3-147, 149-314**' in to the text box before printing. When using Edge you will only need to select the text box at the bottom of the list to enter the values.

Note: You may need to select '**More Settings**' to view all these options, particularly using Edge. Wording in the dialogue box that opens when selecting print may be slightly different depending on the browser; the examples given are specific to Chrome and Edge on Windows.

/p/

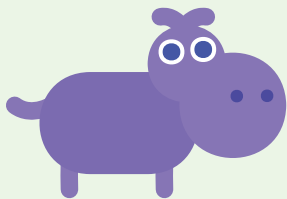
 Phonics   Shed

p



pig

pp

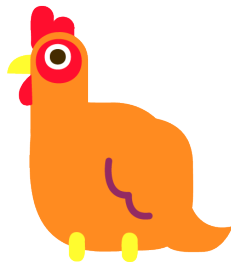


hippo

/h/

 Phonics  Shed 

h



hen

wh



who

/y/

 Phonics  Shed

y



yoga

i

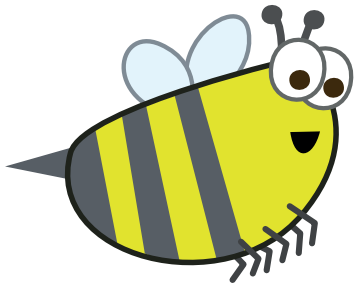


onion

/b/

 Phonics  Shed 

b



bee

bb



gibbon

bu



builder

pb

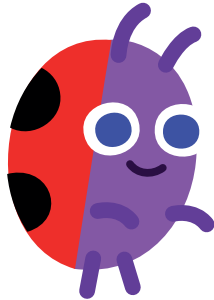


cupboard

U

 Phonics Shed

l



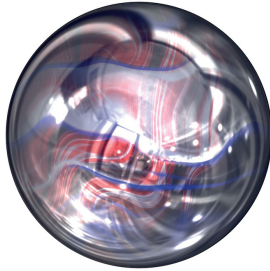
ladybird

ll



doll

le

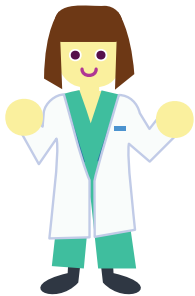


marble

IVI

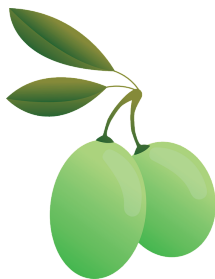
  
Phonics Shed

v



vet

ve



olive



vv



revving

/d/

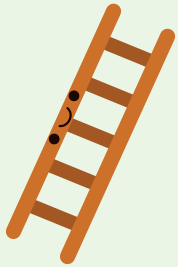
 Phonics Shed

d



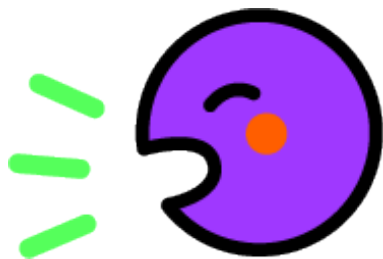
dog

dd



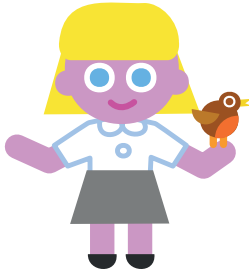
ladder

ed



yelled

de



blonde

/r/

 Phonics Shed

r



rat

rr



parrot

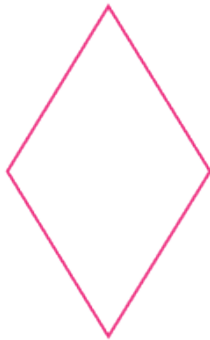


wr

wrong



rh

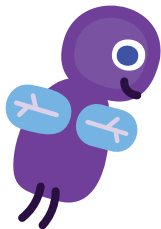


rhombus

/f/

 Phonics  Shed 

f



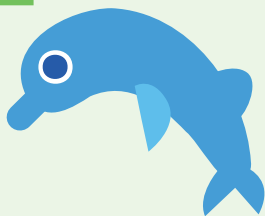
fly

ff



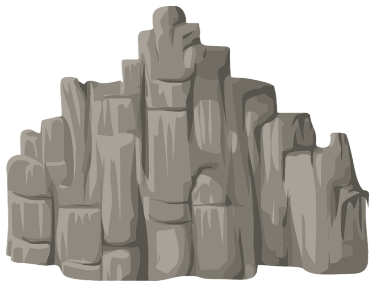
puffin

ph



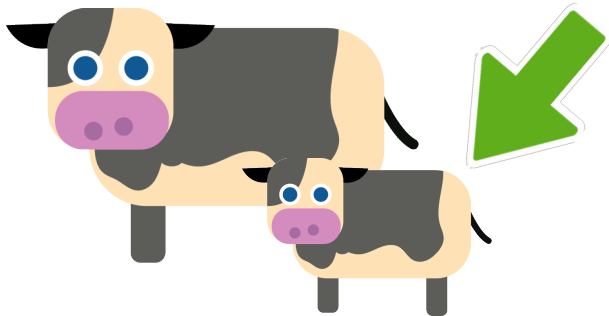
dolphin

gh



rough

lf



calf

ffe



giraffe

lgl

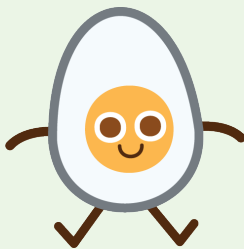
 Phonics  Shed 

g



goat

gg



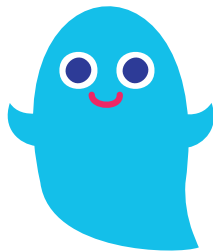
egg

gu



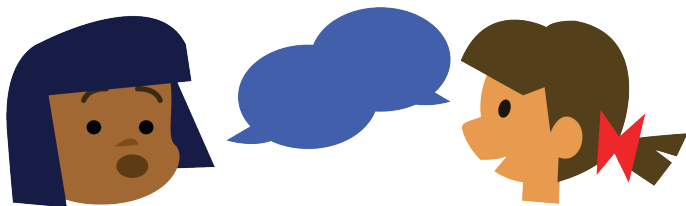
guess

gh



ghost

gue



dialogue

/m/

 Phonics Shed

m



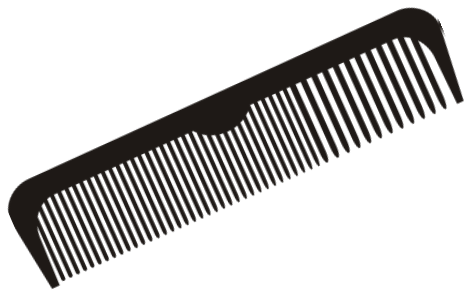
map

mm



hammer

mb



comb

mn



autumn

me



welcome

/n/

 Phonics Shed

n



nurse

nn



bunny

kn



knight

kn



knight

ne



scone

gn

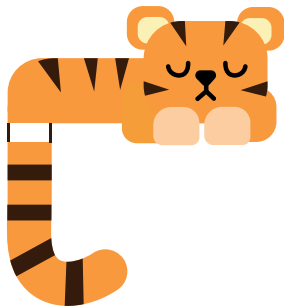


sign

/t/

 Phonics Shed

t



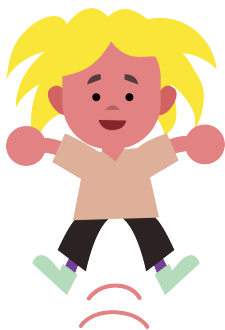
tiger

tt



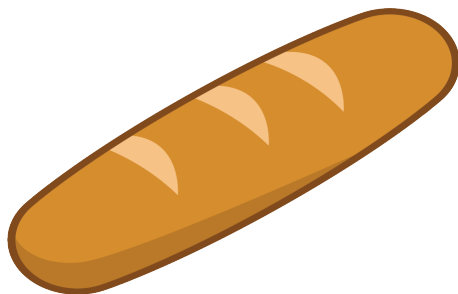
bottle

ed



jumped

tte



baguette

te



taste

th



Thomas

pt



receipt

bt

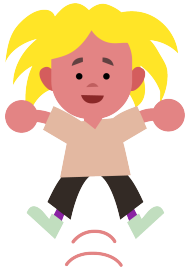


doubt

lji

  
Phonics Shed

j



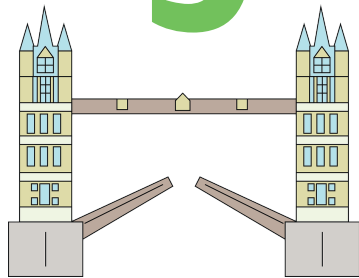
jump



9

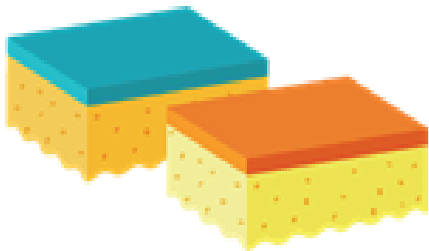
giraffe

dge



bridge

ge



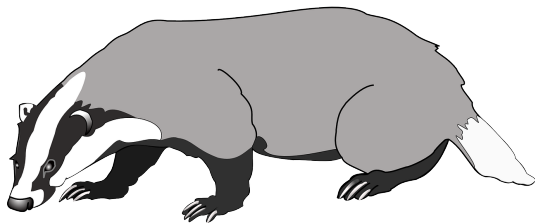
sponge

gi



hygiene

dg

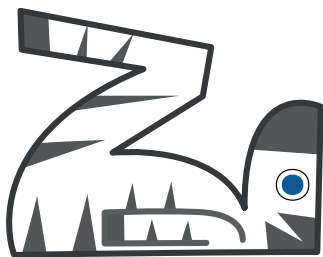


badger

/z/

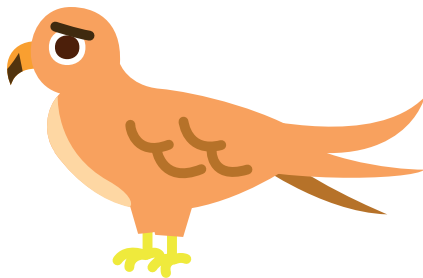
 Phonics Shed

Z



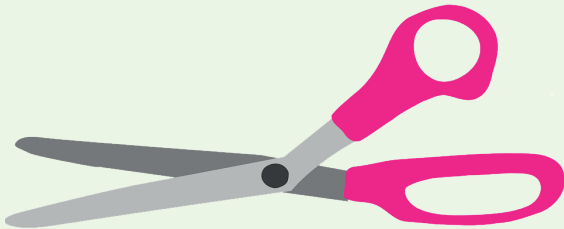
zebra

zz



buzzard

SS



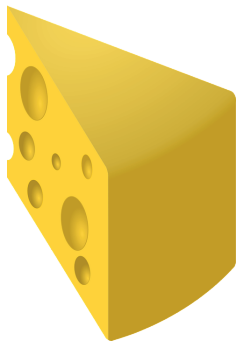
scissors

S



nose

se



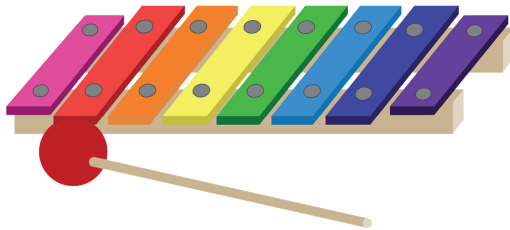
cheese

ze



snooze

X



xylophone

IsI

 Phonics   Shed

S



sad

SS



grass

C



princess

ce



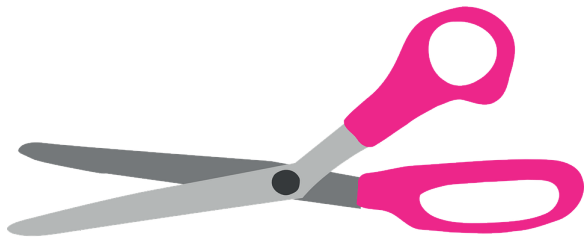
dance

se



house

SC



scissors

st



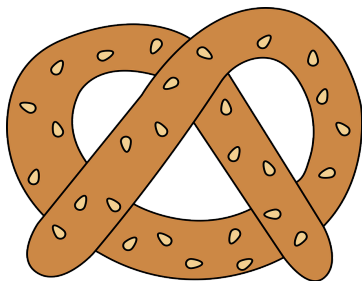
listen

ps



psychic

z



pretzel

/k/

 Phonics   Shed

/k/

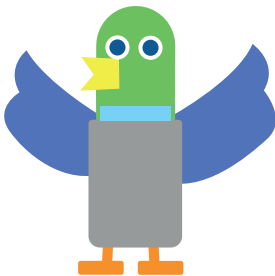
 Phonics   Shed

C



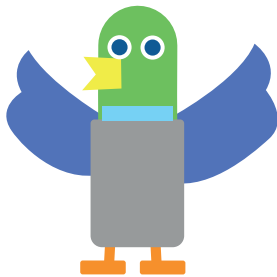
cat

ck



duck

ck



duck

k



kangaroo

k



kangaroo

ch



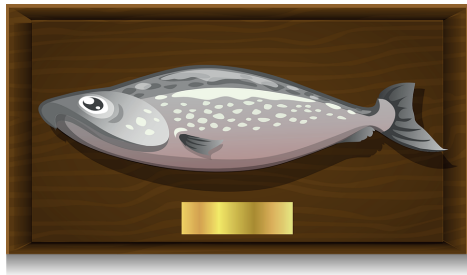
chameleon

CC



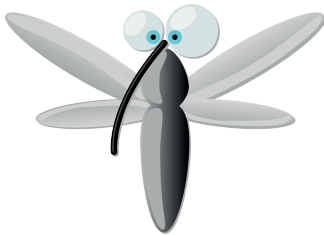
broccoli

que



plaque

qu

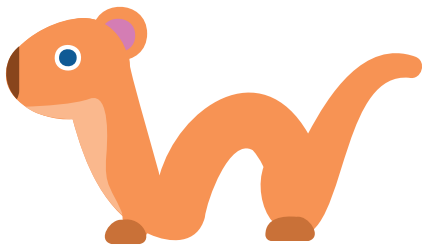


mosquito

/w/

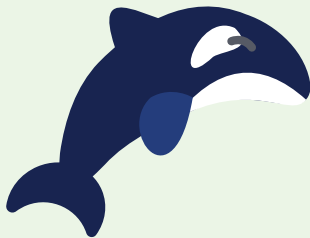
 Phonics  Shed 

W



weasel

wh



whale



0

1

one

(/w/ + /o/)

/kw/

(/k/ + /w/)

 **Phonics Shed**

/kw/

(/k/ + /w/)

  
Phonics Shed

qu



quail

/ks/

(/k/ + /s/)

 **Phonics Shed**

/ks/

(/k/ + /s/)

 Phonics Shed

x



fox

lgz/

(/g/ + /z/)

  **Phonics Shed**

X

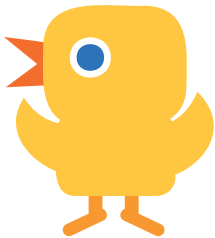


exam

/ngl/


Phonics Shed

ng



wing

ngue



tongue

n(k)



think

(/ng/ + /k/)

n(k)



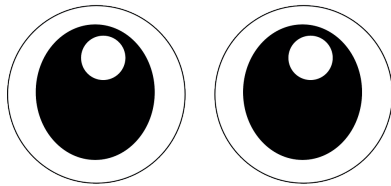
think

(/ng/ + /k/)

/zh/

Phonics Shed

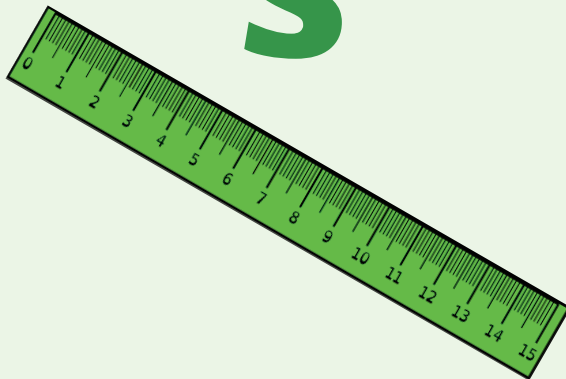
si



vision



S



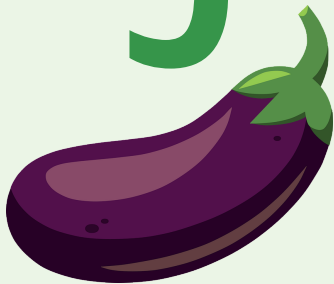
measure

ge



camouflage

g

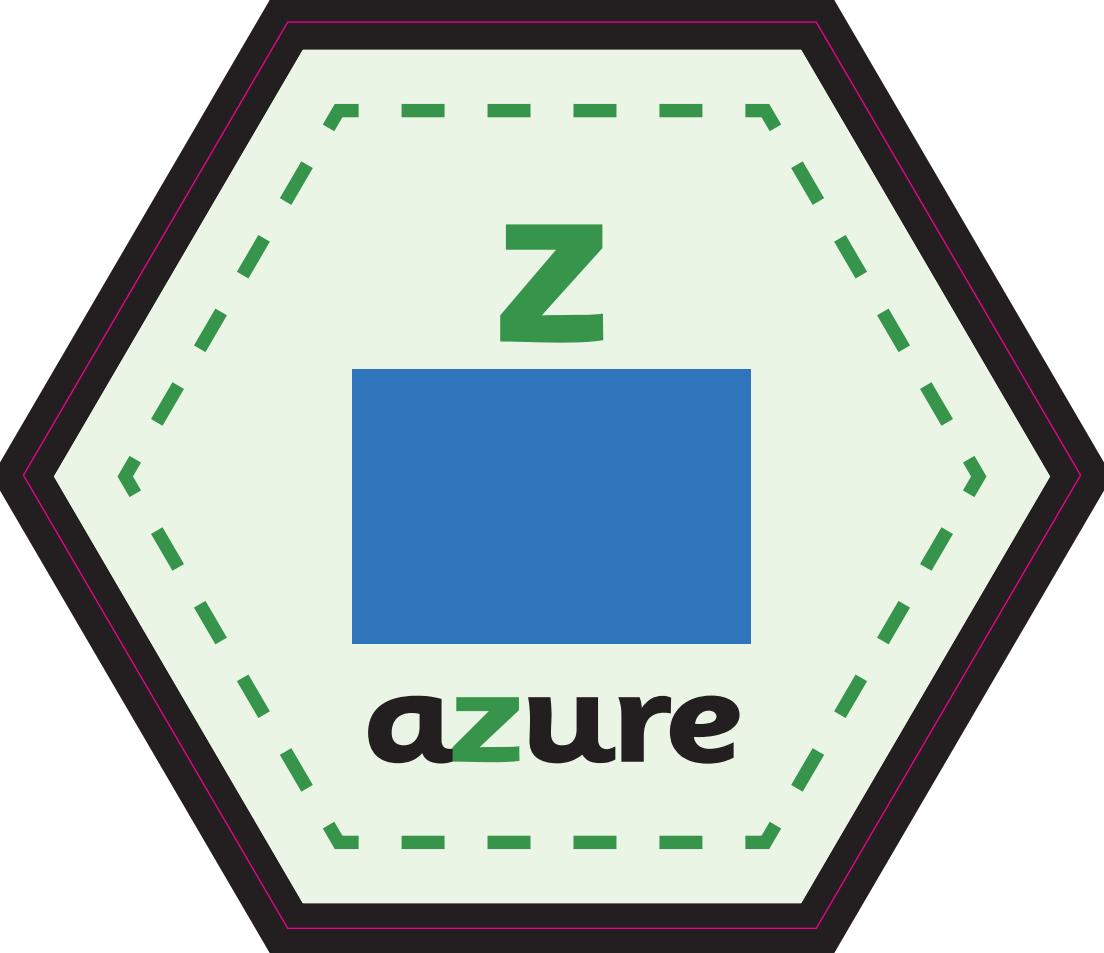


aubergine

j



Taj Mahal



Z



azure

ti

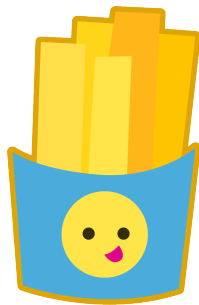
$$1 + 4 = 2 + 3$$

equation

/ch/

 Phonics Shed

ch



chips

tch



watch

t



vulture

ti



question

C



cello

CC

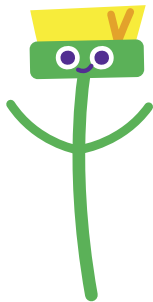


cappuccino

/sh/

 Phonics  Shed 

sh



brush

ti



caution

ch



chef

ci



magician

si



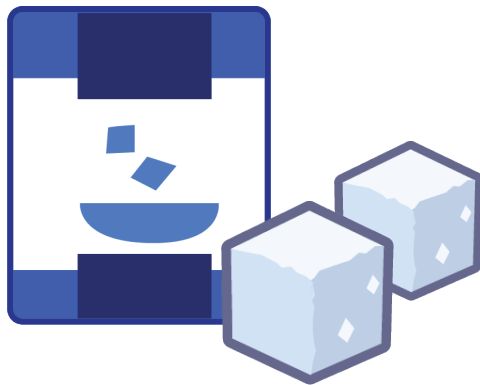
mansion

ssi



percussion

S



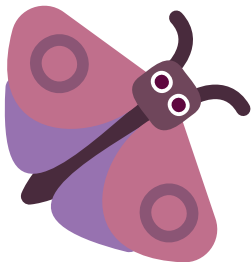
sugar

unvoiced

/th/

**Phonics Shed**

th



moth

voiced

/th/

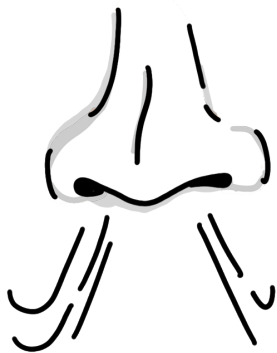
**Phonics Shed**

th



weather

the

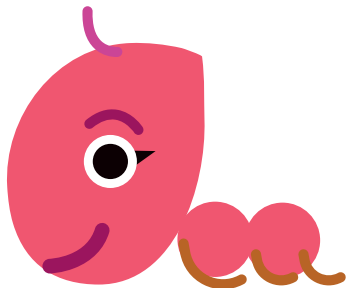


breathe

/a/

Phonics Shed

a



ant

ai



plait

au



laugh

i



meringue

101

 Phonics   Shed

o



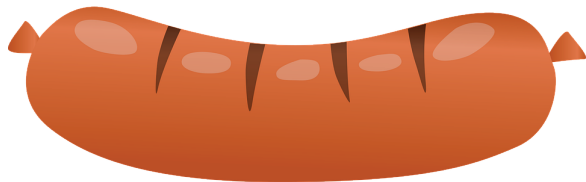
otter

a



wasp

au



sau**sa**ge

e



ensuite

ou



cough

lel

 Phonics  Shed 

e



elf

ea



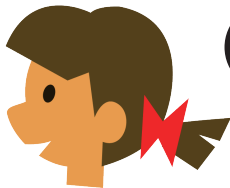
pheasant

a



many

ay



says

ai



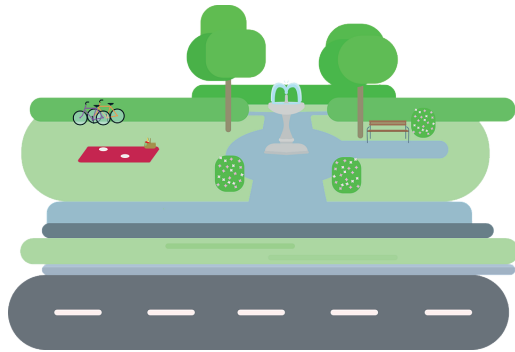
said

ie



friend

ei



leisure

/i/

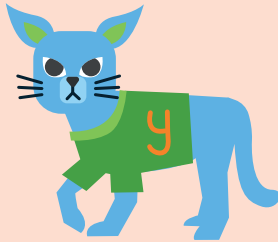
 Phonics  Shed 

i



imp

y



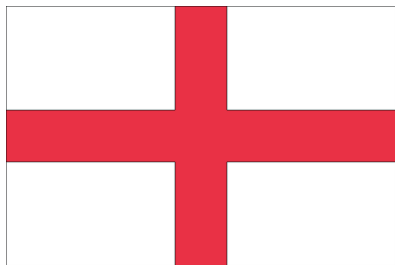
lynx

a_e



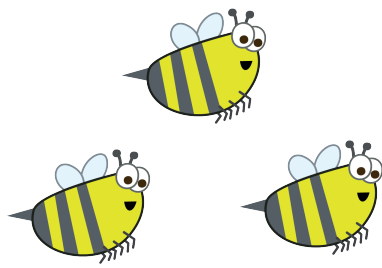
cabbage

e



England

u



busy

O



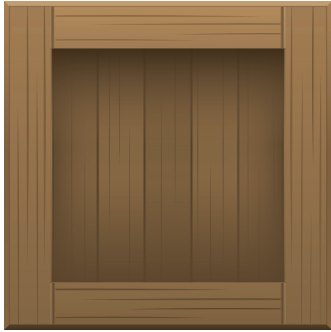
women

hard

/u/

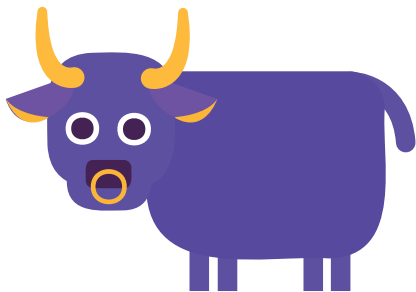
  
Phonics Shed

oo



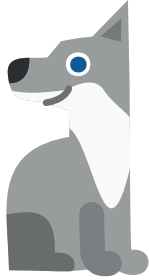
wood

u



bull

O



wolf

oul

shoul



could

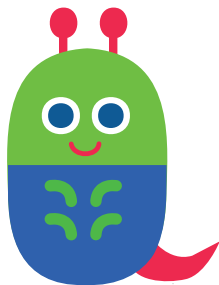
would

soft

/u/

 Phonics Shed

u



bug

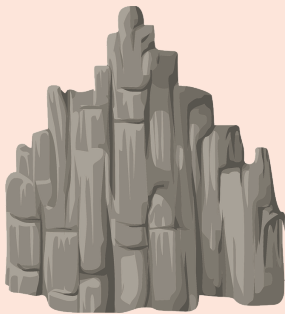


O



love

ou



rough

/ai/

 Phonics  Shed 

a_e



grape

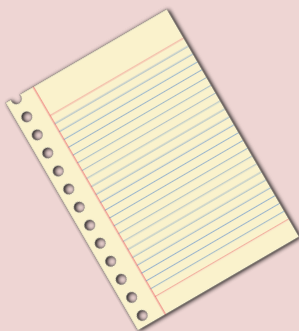
ay



play



a



paper

ai



rain



ey



grey

aigh



straight



eigh

8

eight

é



café

ea



great

ae



sundaae****

ei



reindeer

leel

Phonics Shed

ee



sheep

ea



flea

y



jelly

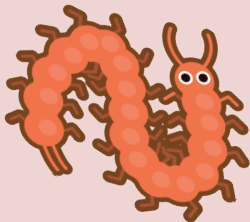
ie



shield

e e

—



centipede

ey



money



e



meteor

ei



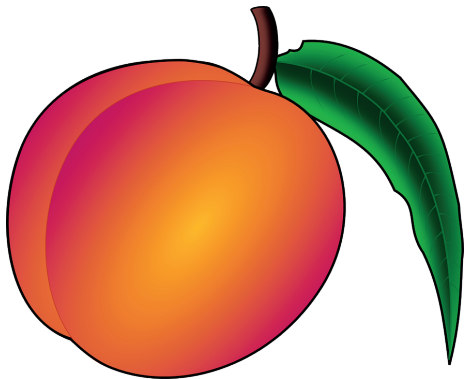
re**ei****pt**

eo



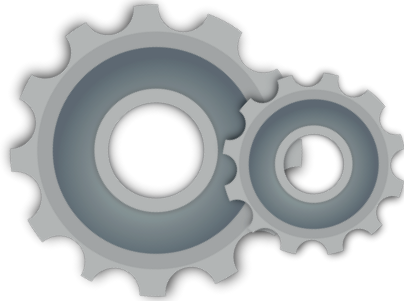
people

i



apricot

i_e

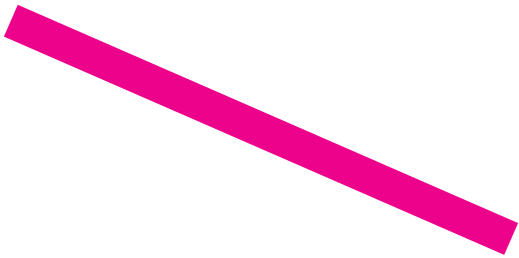


machine

/igh/

 **Phonics**  **Shed** 

i_e



line

i



lion

igh



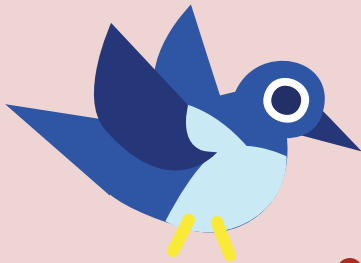
light

y



spy

ie



magpie

y_e



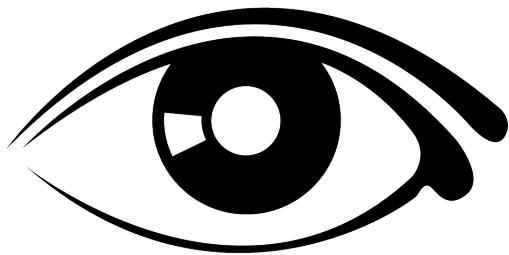
type

ye



bye

eye



eye

loal

Phonics Shed

o _ e



cone

OW



rainbow

oa



toad

O



ghost

oe



toe

ou



boulder

oh



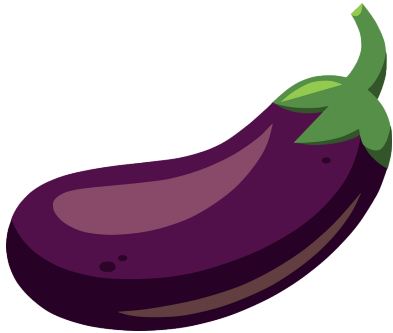
oh

ough



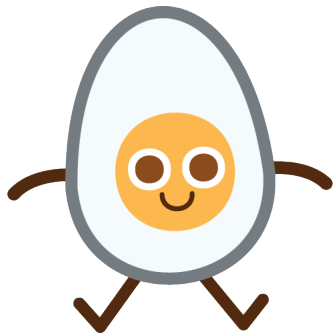
doughnut

au



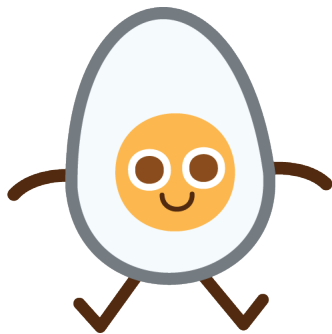
aubergine

ol



yolk

ol



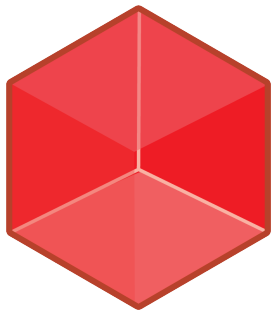
yolk

/ue/

(/y/ + /oo/)

**Phonics Shed**

u_e



cube

ew



newt

ue



statue

u



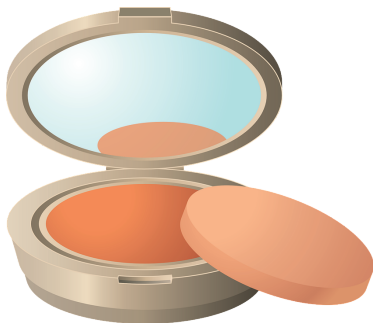
unicorn

eu



feud

eau



beauty

wi



persuit

you

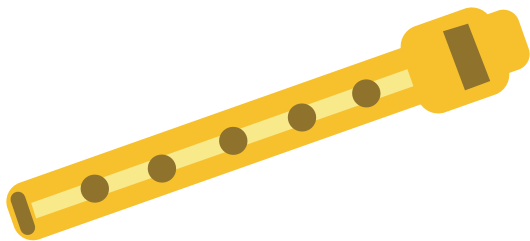


you

/oo/

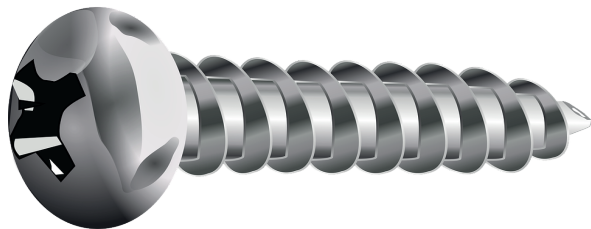
 Phonics  Shed 

u_e



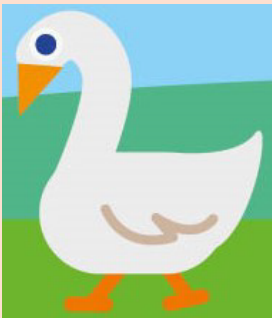
flute

ew



screw

oo



goose

ou



soup



ue

blue

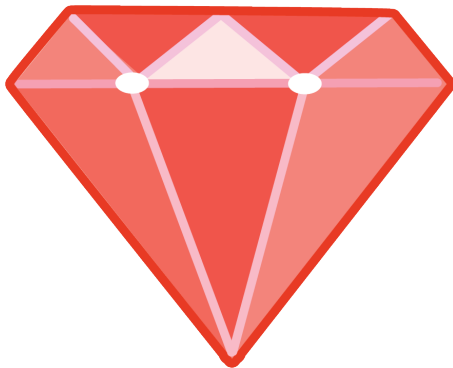


O



who

u



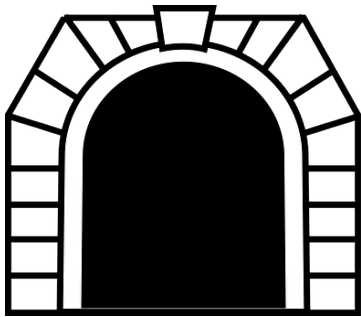
ruby

ui



fruit

ough



through

oe



shoe

WO

2



two

eu

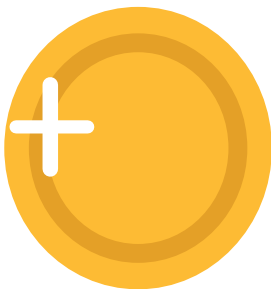


sleuth

/oi/

 Phonics  Shed 

oi



coin

oy

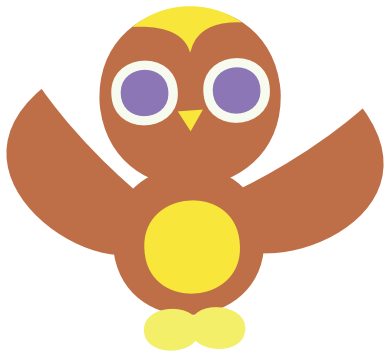


boy

lowl

 Phonics Shed

OW



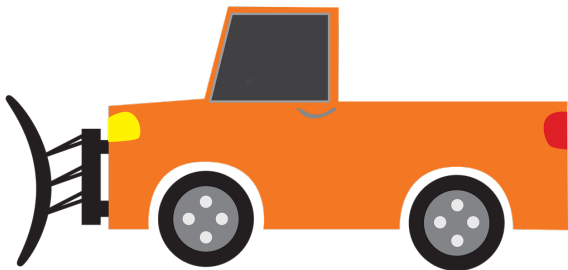
brown

ou



mouse

ough



plough

/ar/

 Phonics Shed

ar



star

a



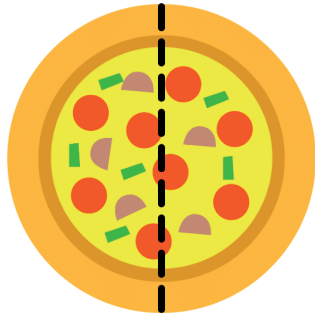
llama

are

are



al



half

ear



heart

au

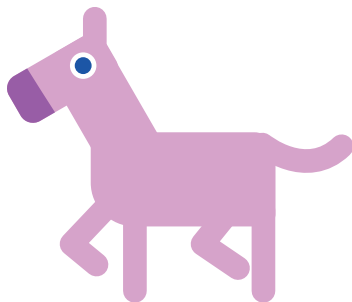


laugh

/or/

 Phonics Shed

or



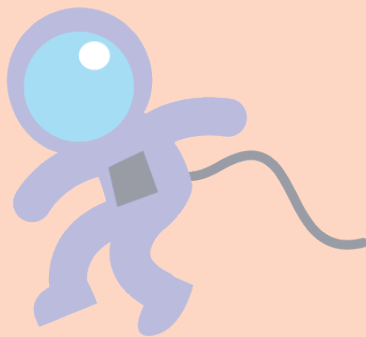
horse

aw



fawn

au



astronaut

ore



snore

a



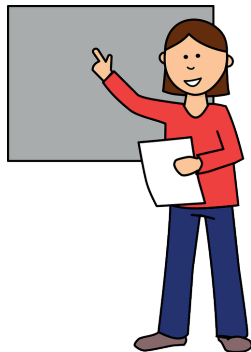
water

ough



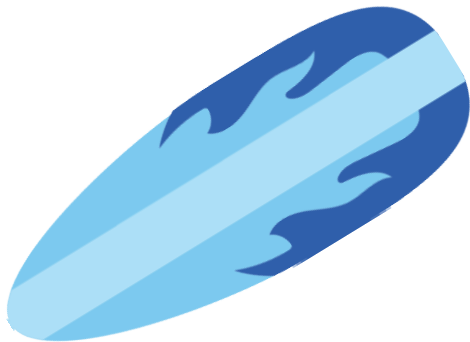
thought

augh



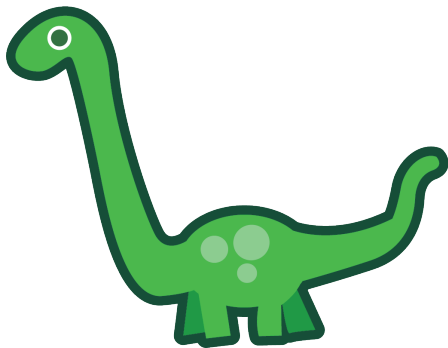
taught

oar



board

aur



dinosaur

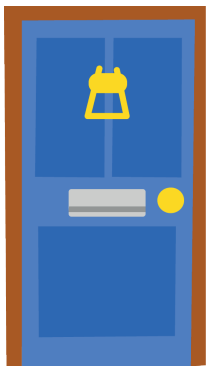


our

4

four

oor



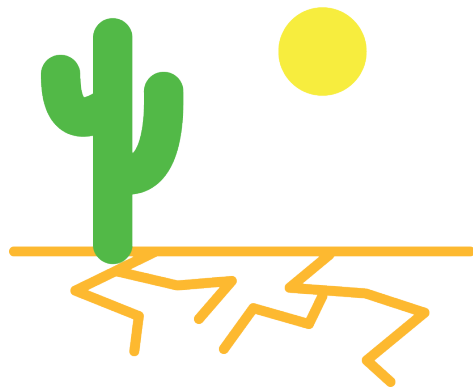
door

wre



s**wre**

ar



warm

al



walk

al



walk

ou're

y **ou're** 

(you are)

/ur/

 Phonics   Shed

ir



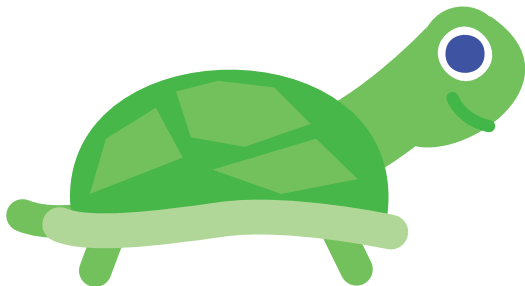
girl

er



gerbil

ur



turtle

or



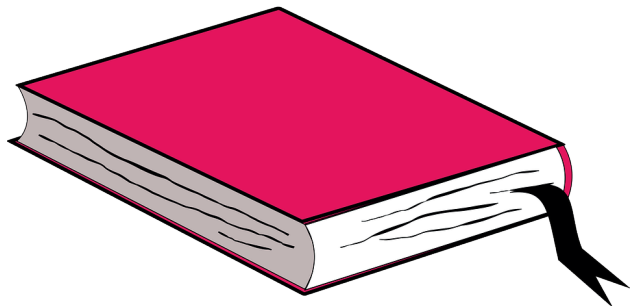
worm

ear



earl

our



journal

ere

were



/air/

 Phonics   Shed

air



fairy

are



dare

ear



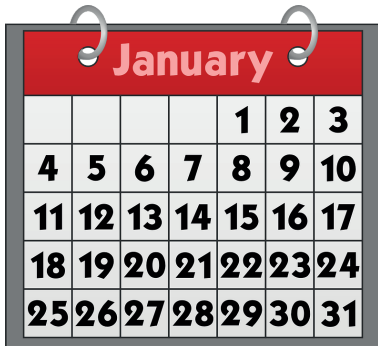
bear

ere



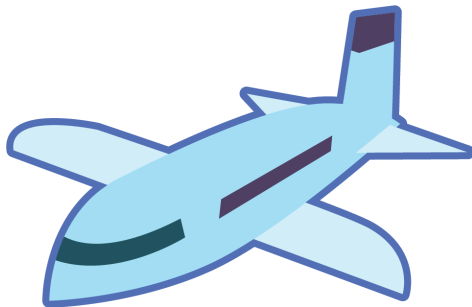
wh**ere**

ar



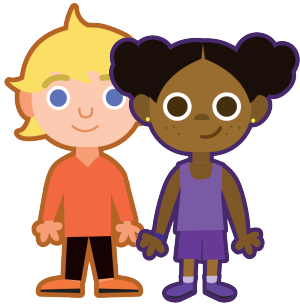
January

aer



aeroplane

eir



their

aire

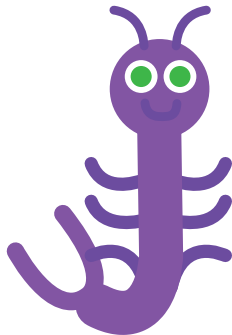


millionaire

/ear/

 Phonics  Shed 

ear



earwig

eer



reindeer

ere



sphere

ier



chandelier



er

0

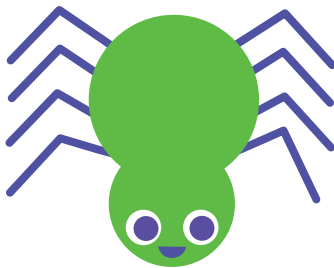
zero

**schwa
ending**

/uh/

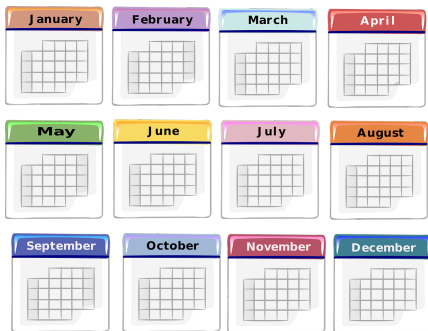
 **Phonics Shed**

er



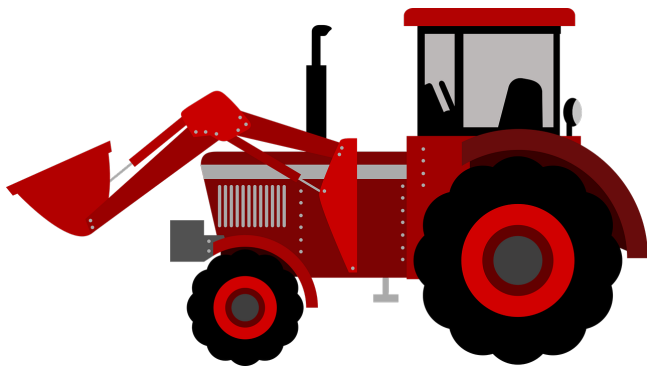
spider

ar



calendar

or



tractor

ure



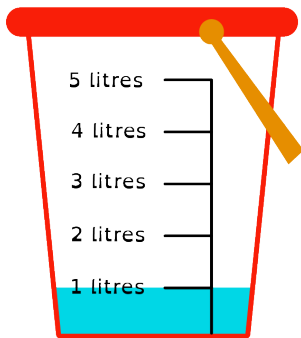
vulture

ah



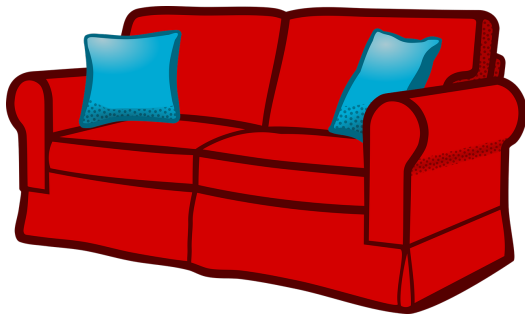
Noah

re



litre

a



sofa

The sounds
of
'ure'

 Phonics Shed

/y/+/or/



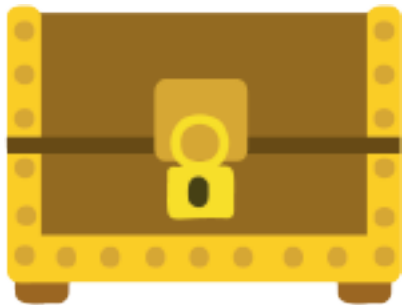
manure

/or/



sure

/uh/



treasure